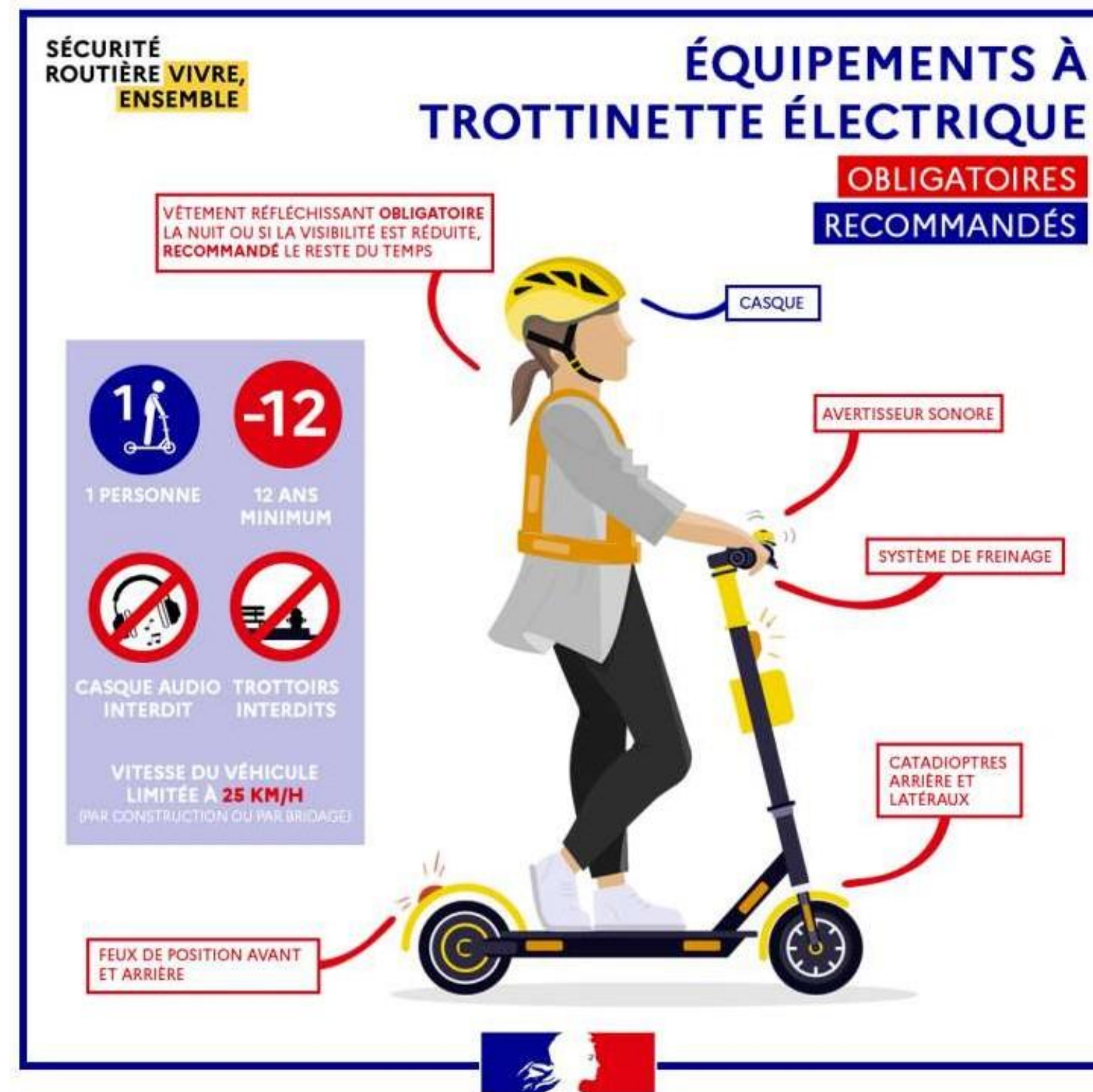


REGULATIONS IN FORCE FOR THE USE OF AN ELECTRIC SCOOTER

Equipment and regulations on board a PMD*

Mandatory equipment when using a PMD

- Front & rear lights
- Rear and side retro-reflectors
- A braking system
- An audible warning (horn, bell)
- A helmet



Reminder of the regulations in force when using a PMD

- Be at least 12 years old
- Using the PMD alone
- Do not drive on the pavement
- Do not use headphones or earphones
- Do not exceed 25km/h on public roads
- Your vehicle must be insured (minimum civil liability declaration)

Attention legal framework

- It is forbidden to drive a vehicle whose maximum speed is not limited to 25 km/h. This means that if you disable your vehicle, you can only use it on private land and if you use it on the public highway, it is imperative that you bring your vehicle into compliance.
- Unleashing an PMD (Personal Mobility Device) exposes you to a fine of 1500€ and the seizure of the vehicle if you exceed the authorised speed limit (25 km/h) on the public highway.
- We remind you that it is compulsory for your vehicle to be insured (minimum civil liability declaration), and we advise you to wear a helmet and protective equipment.